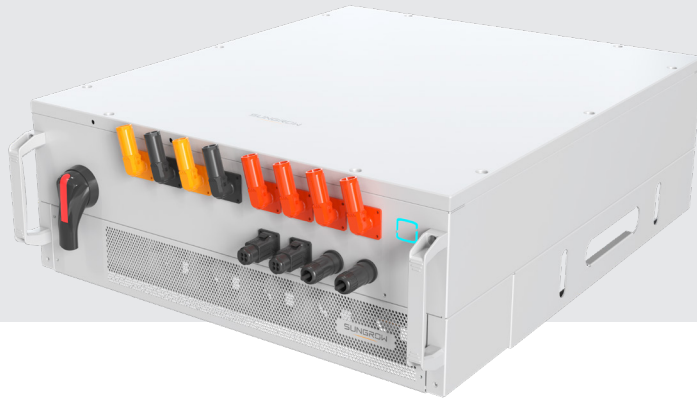


SC110CX

Power Conversion System

NEW



HIGH YIELD

- Advanced three-level technology, max. efficiency 98.5%
- Intelligent air cooling, no derating up to 45°C
- Wide DC voltage operation window, full power operation at 1000V

FLEXIBLE APPLICATION

- Bidirectional power conversion system with full four-quadrant operation
- Compatible with high voltage battery system, low system cost
- Battery charge&dis-charge management and black start function integrated

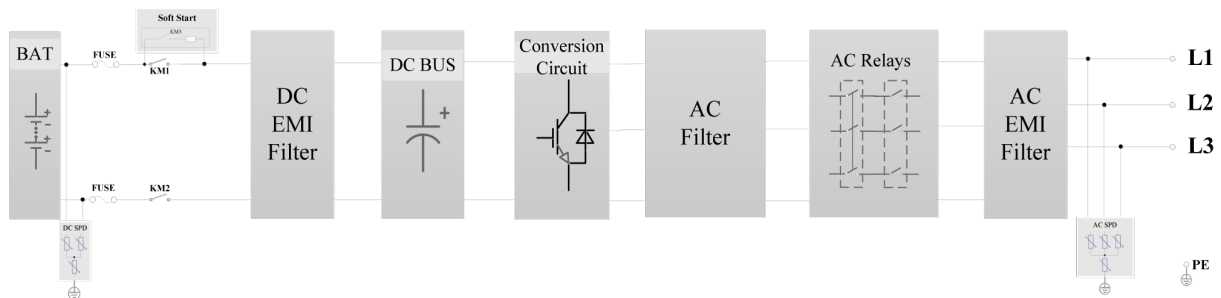
SMART O&M

- Modular design, easy for maintenance
- IP66 protection degree
- Optional C5 anti-corrosion degree, adjust to applications close to the sea

GRID SUPPORT

- Compliant with IEC 62477, IEC 62109 and grid regulations
- Fast active/reactive power response
- L/HVRT, VSG, FRT, soft start/stop, specified power factor control and reactive power support

CIRCUIT DIAGRAM



| Product name | SC110CX |
|---|---|
| DC side | |
| Max.DC voltage | 1000 V |
| Min.DC voltage | 600 V |
| DC voltage range for nominal power | 600 V ~ 1000 V |
| Max.DC current | 205.8 A |
| Max.DC power | 121 kw |
| AC side (On-Grid) | |
| Nominal power | 110 kW @ 45 °C / 77 kW @ 50 °C |
| Max.AC current | 183.8 A |
| Nominal voltage | 400 V |
| Voltage range | 340 V ~ 440 V |
| Nominal frequency / frequency range | 50 Hz / 45 Hz ~ 55 Hz |
| Max.THD of current | < 3 % (Nominal power) |
| DC voltage component | < 0.5 % Un (Linear balance load) |
| Power factor range | 1.0 leading ~ 1.0 lagging |
| Feed-in phases / AC connection | 3 / 3 |
| AC side (Off-Grid) | |
| Nominal voltage | 400 V |
| Nominal frequency | 50 Hz |
| Max.THD of voltage | < 3 % (linear load) |
| Unbalance load capacity | 100 % |
| Efficiency | |
| Max efficiency | 98.5 % |
| Protection | |
| Reverse polarity protection | Yes |
| AC short circuit protection | Yes |
| Leakage current protection | Yes |
| Overvoltage protection | DC Type II / AC Type III |
| Grid monitoring / Ground fault monitoring | Yes |
| Insulation monitoring | Yes |
| Overheat protection | Yes |
| General data | |
| Dimensions (W * H * D) | 820 mm * 310 mm * 1019mm |
| Weight | 105 kg |
| Degree of protection | IP 66 |
| Operating temperature range | -30 °C ~ 60 °C (> 45 °C derating) |
| Operating humidity range | 0 % ~ 100 % |
| Temperature control method | Intelligent air cooling |
| Noise | ≤ 74 dB |
| Max.operating altitude | 4000 m (> 4000 m derating) |
| Display | LED, Bluetooth + APP |
| Communication | Ethernet |
| Compliance | AS / NZS 4777.2, AS / NZS 3000, IEC 61000, IEC 62477, IEC 62109 |
| Grid support | L / HVRT, active & reactive power control and power ramp rate control |
| Country of manufacture | China |

